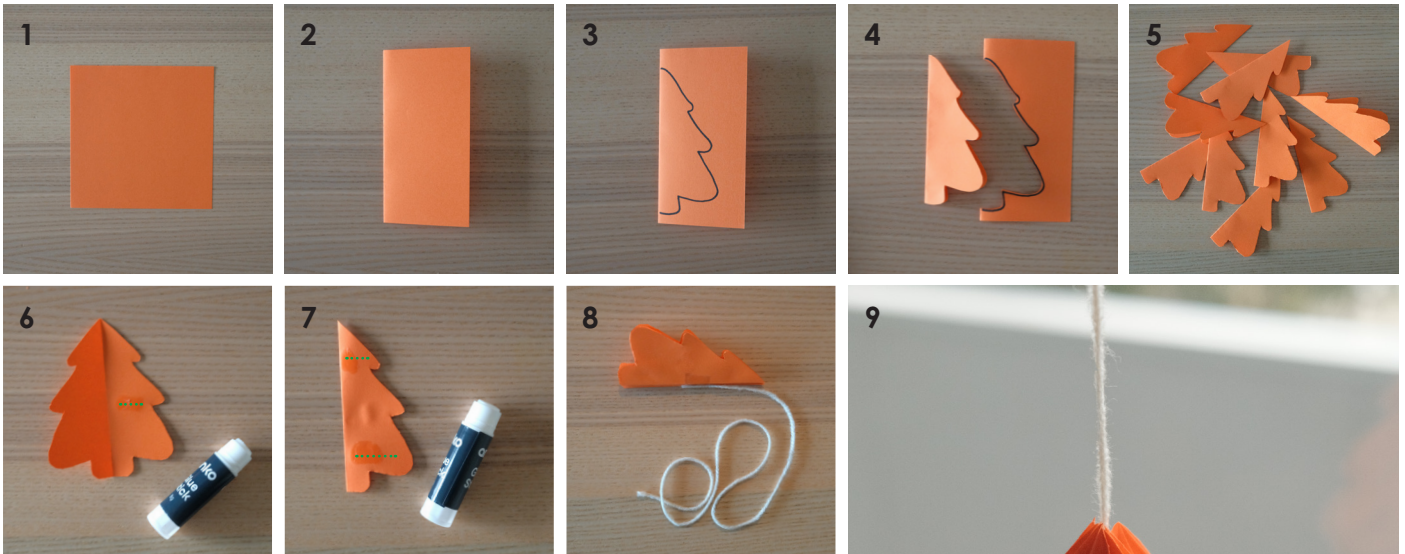


kindershapes | Christmas Tree Ornament



INSTRUCTIONS

1. Gather Your Materials. Pick a colour of Kinder Squares from your assorted pack and lay them flat on your workspace.
2. Fold the square in half to create a crease down the center. This will help you create symmetrical shapes.
3. Create the Christmas Tree Outline. Use a Christmas tree cookie cutter or freehand to trace the outline of a Christmas tree onto the folded square. The fold will give you a perfectly symmetrical shape. If you don't have a cookie cutter, you can draw half of the tree and cut it out.
4. Cut out the Christmas tree shape following the outline you traced.
5. Repeat the Process: Repeat steps 3 and 4 until you have 10 Christmas tree cutouts.
6. Glue the Inside of the Tree: Take one cutout and apply glue to the center of the inside (the part that will be on the inside of the stack). See image 6 for reference.
7. Glue the Outside of the Tree: On the outside of the cutout, add glue to the upper and lower edges of the tree. See image 7 for guidance. This will help hold the trees together when stacked. Start stacking the cutouts, one on top of the other, aligning them so that they gradually form a layered tree shape. Secure the stack in place.
8. Attach a piece of string to the top of the stacked trees and secure it with tape (see image 8 for reference). This will allow you to hang the ornament.
9. Finalize the Tree Shape: Gently press the stacked cutouts together to form a 3D Christmas tree shape. Hang it by the window or on your Christmas tree for a festive touch!



TOOLS

Glue Stick
String
Tape
Scissors
Christmas tree cookie cutter (optional for tracing)

PRODUCT:

- 107385 - Matt Paper Kinder Squares 80gsm Double Side 127mm



Scan me for more craft ideas